

HOW TO REDUCE YOUR ECOLOGICAL FOOTPRINT



CARVER

Summary

Traffic and freight transport account for almost a quarter of all CO₂ emissions in the Netherlands. That's why it's so important to make transportation less damaging to the environment. Carver is a Dutch manufacturer of light electric vehicles that allow people to travel smarter, faster and more sustainably, reducing their ecological footprint.

The Carver is an environmentally-friendly vehicle offering a 100% (commercial) electric mode of transport for two people with luggage. In addition, the Carver Cargo is a sustainable alternative for delivering products. In this case, the vehicle is suitable for one person and has 500 litres of cargo space.

The sustainable Carver is comfortable and, what's more, lots of fun to drive. It offers huge advantages: the Carver solves your parking problems, you'll arrive at your appointments warm and dry, and you'll glide down the road thanks to the patented Dynamic Vehicle Control (DVC™).



ECOLOGICAL FOOTPRINT

A call for an environmentally-friendly vehicle for commercial use

Many companies and freelancers are engaged in sustainable business practices. They feel it's important to reduce their ecological footprint. In terms of mobility, the Carver is the perfect solution. This method of transport is a good middle ground between car and scooter: you stay warm and dry, there's plenty of cargo space, and it's sustainable too. In short, this light electric vehicle by Dutch manufacturers is perfect for sustainable commercial travel in and around the city.

We all want to travel safely and comfortably. Whether it's private or commercial travel. However, traffic and freight transport account for almost a quarter of all CO2 emissions. That's why it's so important to make transportation less damaging to the environment. We can do this by cycling more, sharing modes of transport, or choosing options that are less damaging, such as an electric car.

But what do you do if the journeys you need to make on a regular basis are just too short to be worth jumping in your electric car, but too long to go by bike? Or what if you're looking for a delivery vehicle that has plenty of space, a long range, and also makes your "fleet" more sustainable?

An alternative mode of transport

The answer is the Carver. According to many entrepreneurs and freelancers, this vehicle is the future, and the investment is more than worth it. Someone who falls into this category is Stephan van Veen, franchise owner of a Domino's in Wassenaar, South Holland. According to him, previous experiences with electric vehicles were unsuccessful. The distances you were supposed to be able to drive on a single battery charge were rarely achieved in practice and the build quality left a lot to be desired.

Ecological footprint

However, Stephen managed to achieve his dream of making his fleet more sustainable with the Carver. In fact, research shows that the ecological footprint of the Carver is significantly lower than conventional and electric cars. Thanks to its low weight, low air resistance and maximum speed tailored for city use, the Carver consumes very little energy compared to conventional cars with combustion engines or electric motors. As a result, the battery pack is also small.

Let's take a look at some figures: if you're driving around the city, the Carver requires around 2.5 to 5 times less energy than a conventional car. If you use grey energy, the CO2 footprint of the Carver is 7 tons of CO2 across its entire lifespan (93,000 miles). However, if you charge the Carver with green energy, its ecological footprint is only 2.5 tons of CO2. In both instances, manufacturing requires 2 tons of CO2. This means that the differences are huge.

Here are some more comparisons for you. When you're driving in the city and you're using grey energy, then the CO2 footprint of the Carver is 3.5 times smaller than the ecological footprint of the average electric car. Its carbon footprint is 5 times smaller than that of an average conventional car with a combustion engine, and 1.7 times smaller than that of a conventional scooter.

When using green energy, the footprint of the Carver is even smaller. In this case, the ecological footprint is 6 times smaller than the footprint of the average electric car, 14 times smaller than the average conventional car with a combustion engine, and 5 times smaller than an average conventional scooter.

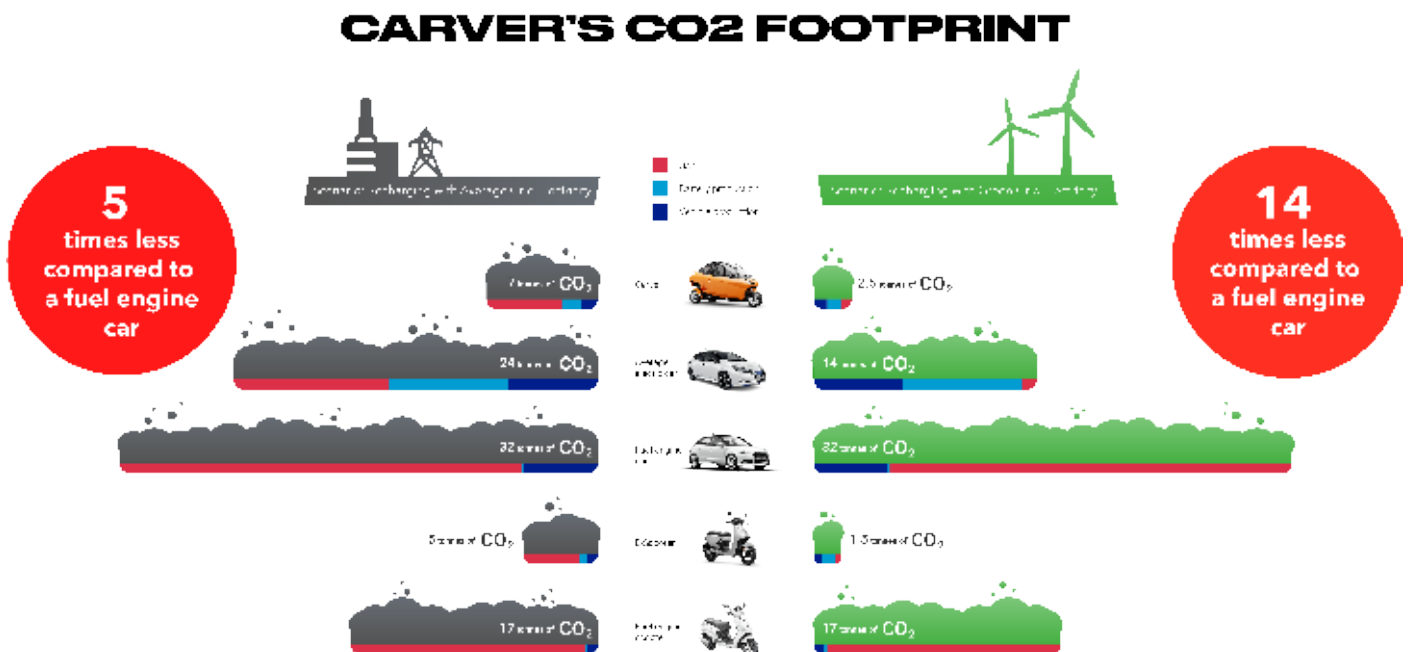


Image 1. CO2 footprint comparison (2022)

Clean vehicles in the city centre

Switching to the Carver isn't just important in terms of reducing your own (corporate) ecological footprint; in the future it will become increasingly common for fossil-fuel-powered lorries and delivery vehicles to be banned from city centres. This will be done in order to improve the air quality and reduce CO2 emissions.

The result is that from 2025 onwards, only clean vehicles - like the Carver - will be permitted to drive around city centres. The aim is that over the next few years, businesses will replace their old (delivery) vehicles with sustainable alternatives. The zero-emission zones are an important step towards fully emission-free traffic by 2050.

Even more positives

Of course, driving the Carver has many other benefits. One of the most enticing advantages for businesses is the low running costs. This is because you don't have to pay for petrol, road tax or private motor vehicle tax. You can fully charge your battery for just 1.75 euros. And you can even recuperate those costs because you can use the Carver as a striking and sustainable mobile billboard!

Charging is also really easy. You can charge the Carver at any socket with the 220V plug. Would you rather charge up at a charging station? Then purchase our adapter cable. With it you can charge your vehicle at any charging station.

Warm and dry

Another major advantage compared to a bike or an (electric) scooter is that you'll always stay warm and dry in a Carver. And that's particularly important for business interactions because you obviously want to make a good impression. This means that having to meet customers while you're soaked to the skin will finally be a thing of the past.

You can completely close the Carver, so you'll stay totally dry. However, in nice weather you can roll up the roof, meaning you're suddenly driving around in a convertible, ready to enjoy the sunshine.

Easy to drive

Driving a Carver is really easy. Since it's so small, you can manoeuvre it through the narrowest streets, avoiding traffic jams. The tilting mechanism ensures that the Carver has excellent roadholding, is manoeuvrable, and remains stable through corners. You'll feel like you're floating down the road. This is thanks to the patented Dynamic Vehicle Control (DVC™) at the heart of the Carver. This worldwide one-of-a-kind tilting technology is a 100% Dutch innovation. It automatically regulates your balance in bends, slopes and uneven patches.

Carver Base, R+ en S+

The Carver and the Carver Cargo have various models to choose from. The 2.89-metre-long Base, R+ and S+ have a range of 62-81 miles. The Base and R+ drive at a maximum speed of 28 miles per hour. The S+ can even reach speeds of 50 miles per hour.

Two people can fit in the Carver and it has 75 litres of luggage space. A sustainable alternative for delivering products, the Carver Cargo is suitable for 1 person and has 500 litres of luggage space. The Base and the R+ are 1.49 m high and 98 cm wide, the S+ is 1.49 m high and 1.06 m wide.

Conclusion

Using the Carver as an alternative to an (electric) car or scooter opens up a range of possibilities. This includes the opportunity to make a significant contribution towards meeting climate targets, because there's no time to lose. The Carver does this, and more, with its reduced CO2 emissions that help you to shrink your ecological footprint. The Carver consumes very little energy compared to conventional cars with combustion engines or electric motors.

There are currently around 8.5 million family cars running on fossil fuel in Europe. They drive an average of 20 miles per day carrying 1.1 people. And the traffic jams just keep getting worse. As Dutch manufacturers of light electric city vehicles, we want to help professionals to travel smarter, faster and more sustainably from door to door. The Carver offers an alternative method of transport: greener, cheaper and more compact. Oh, and much more fun! With climate change and mounting traffic jams in our future, now is the time to make the shift to a new, sustainable mode of transport.

